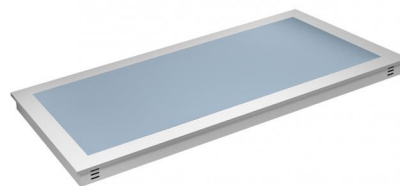


## HEATED TOP UNIT IN TEMPERED GLASS DROP-IN - 4 GN

Heating surface in tempered glass, dimension 4 GN 1/1.  
Independent digital temperature controls, temperature range +30 +100 °C Independent digital temperature controls. Endowed with operating and safety thermostat. Elemento da incasso verticale con piano in AISI 304 altezza della parte sporgente 15 mm, spessore 1 mm.



### Technical Data

<i>Working voltage</i>	230V 1N~ / 50Hz	<i>Electric Power</i>	1,6 kW
<i>Dimensions</i>	142x64x14 cm		

HEATED TOP UNIT IN TEMPERED GLASS DROP-IN - 4 GN  
Self-Service e Drop-in